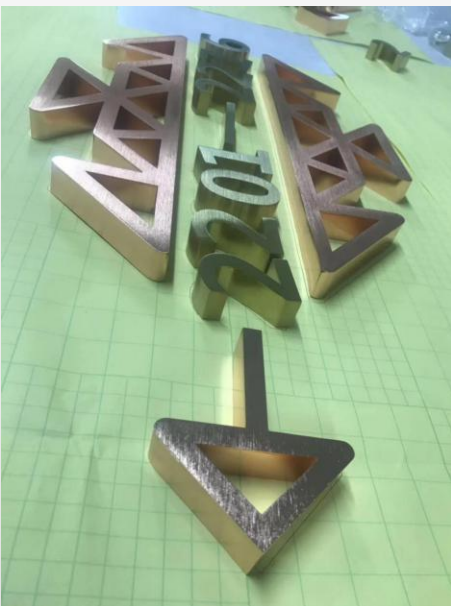


Stainless steel non illuminate letters



More case



Stainless steel back lit letter with 15~20mm frosted clear acrylic :

1.2mm thickness stainless steel for the face

0.8mm thickness stainless steel for the return

15~20mm thickness stainlesssteel for the back

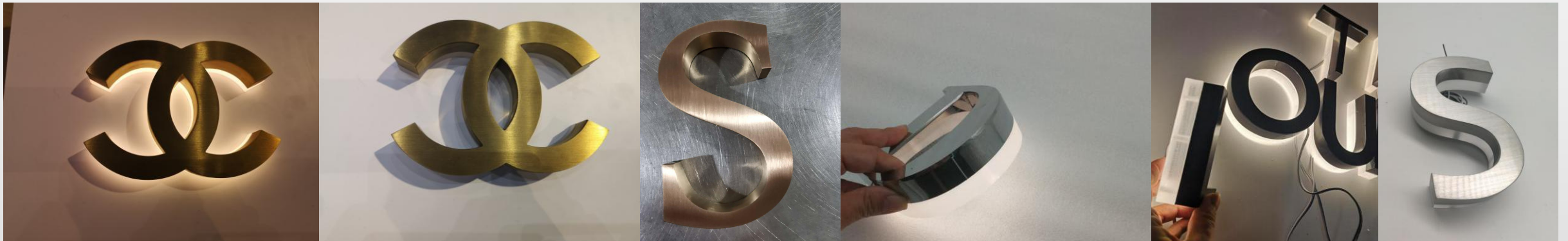
use stud for install, the stud is mounted n the acrylic back

The letter can be titanium coated, painted,brushed , mirror



open inside structure

5mm acrylic is not visible
for glue use



titanium coated in golden color/ rose golden

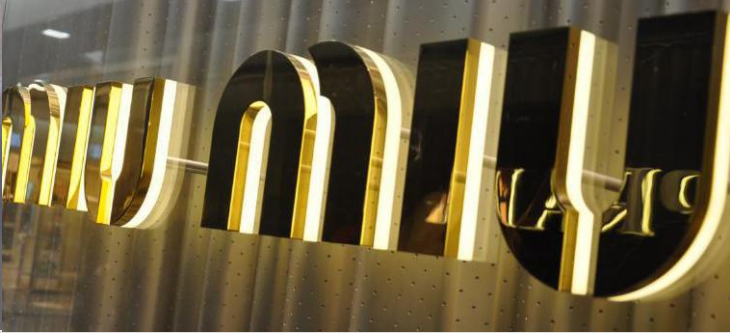
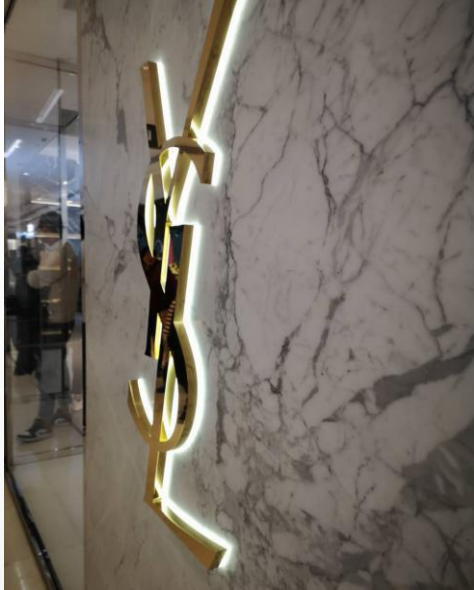
Mirror

painted

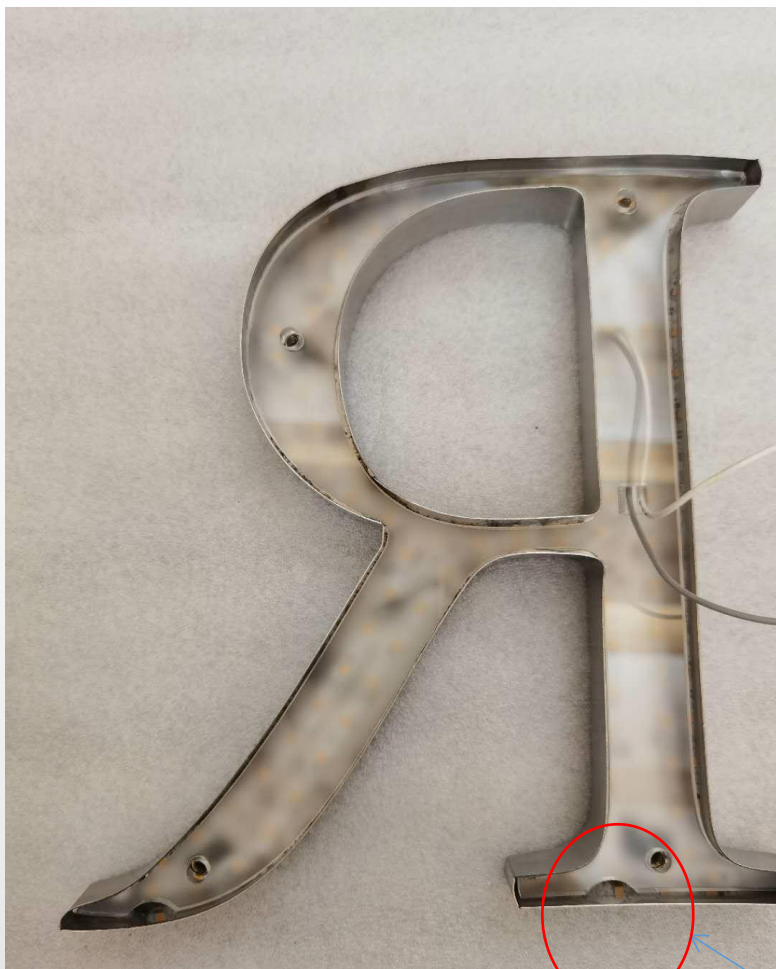
brushed

More case:



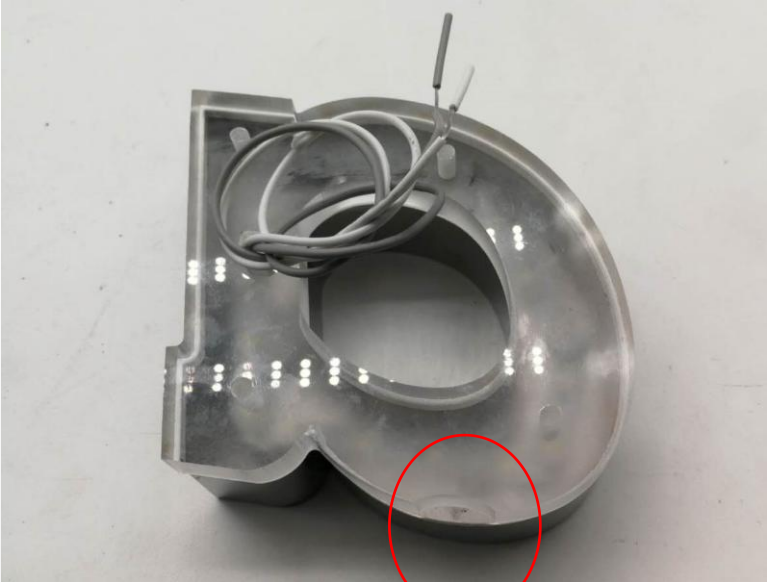


For outdoor:



water release hole for outdoor use

For outdoor:



water release hole for outdoor use

Front lit

Rimless

1.2mm thickness stainless steel for the back

0.8mm thickness stainless steel for the return

can be painted

8mm~15mm thickness acrylic for face, acrylic is glued to the return.

Better small size letter, letter height below 25cm



More case:



Stainless trim cap letters



Suzhou Esign Co.ltd
ellen.ma@szesign.com