

# Illuminate Sign Samples

---

Ellen ma

Phone: (+86)158 0182 2956

Email : [Ellen.ma@szesign.com](mailto:Ellen.ma@szesign.com)

---

# Front lit



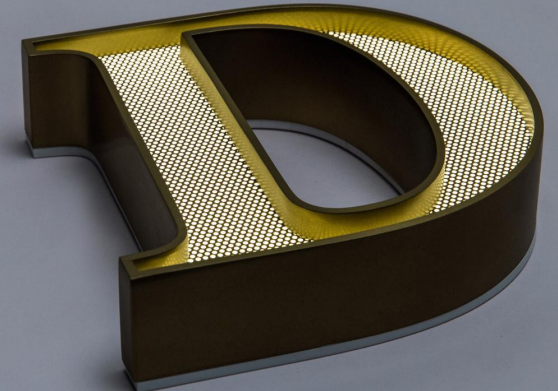
Style : FL-Solid Acrylic  
Side height:25~40mm  
Letter height:50~800mm  
Minimum stroke width:3mm



Style: FL-Super Fine A  
Minimum side height:30mm  
Letter height:80~800mm  
Minimum stroke width:10 mm



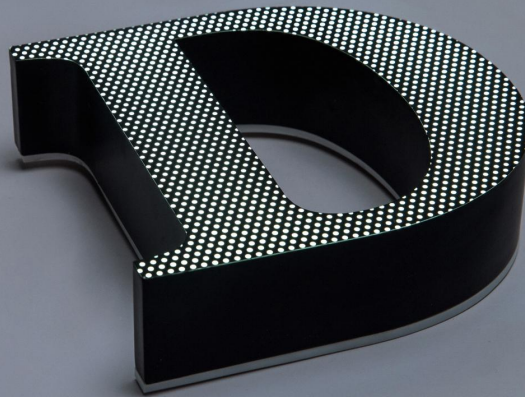
Style : FL-Super Fine B  
Minimum side height:30mm  
Letter height:80~800mm  
Minimum stroke width:10 mm



Style ; FL-Concave Side  
Minimum side height:30mm  
Letter height:100~800mm  
Minimum stroke width:10 mm



Style : FL-Super Fine C  
Minimum side height:30mm  
Letter height:80~800mm  
Minimum stroke width:10 mm



Style : FL-Super Fine D  
Minimum side height:30mm  
Letter height:80~800mm  
Minimum stroke width:10 mm



Style : FL-Laminated  
Side height:25~40mm  
Letter height:50~800mm  
Minimum stroke width:6 mm



Style : FL-Light Box  
Minimum side height:60mm  
Letter height:100~800mm  
Minimum stroke width:10 mm

## Front & Back lit



Style : FBL-Bevelled A  
Side height:25~40mm  
Letter height:50~800mm  
Minimun stroke width:2mm



Style : FBL-Laminated  
Side height:25~40mm  
Letter height:50~800mm  
Minimun stroke width:6 mm



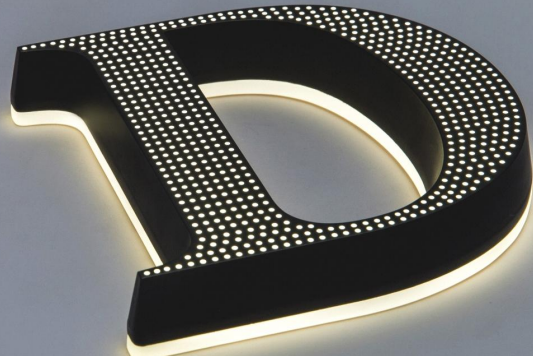
Style :FBL-Universe  
Side height:25~40mm  
Letter height:50~800mm  
Minimun stroke width:10 mm



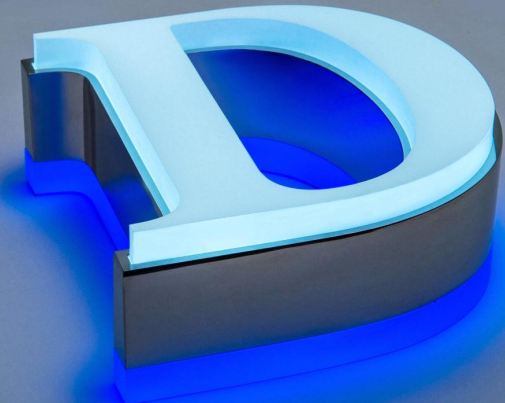
Style : FBL-Light Box A  
Minimun side height:60mm  
Letter height:100~800mm  
Minimun stroke width:10 mm



Style : FBL-UV print  
Side height:25~40mm  
Letter height:50~800mm  
Minimun stroke width:2 mm



Style : FBL-Bevelled B  
Side height:25~40mm  
Letter height:50~800mm  
Minimun stroke width:2 mm



Style : FBL-Paris  
Minimun side height:70 mm  
Letter height:100~800mm  
Minimun stroke width:10 mm



Style : FBL-Light Box B  
Minimun side height:60mm  
Letter height:100~800mm  
Minimun stroke width:10 mm

## Back lit



Style :BL- Eco-version A  
Side height:25~40mm  
Letter height:100~800mm  
Minimum stroke width:10mm



Style :BL- Faux copper  
Side height:25~40mm  
Letter height:50~800mm  
Minimum stroke width:10 mm



Style : BL- titanium coating  
Side height:25~40mm  
Letter height:50~800mm  
Minimum stroke width:10 mm



Style : BL- stainless steel  
Side height:25~40mm  
Letter height:50~800mm  
Minimum stroke width:10 mm



Style :BL- Eco-version B  
Side height:25~40mm  
Letter height:100~800mm  
Minimum stroke width:10 mm



Style : BL- 3D  
Side height:25~40mm  
Letter height:100~800mm  
Minimum stroke width:8 mm



Style : BL- Metal inverted  
Side height:30~80mm  
Letter height:80~800mm  
Minimum stroke width:10 mm



Style : BL- Universe  
Minimum Side height:50mm  
Letter height:80~800mm  
Minimum stroke width:10 mm

# Factory overview



Our factory is located in Wujiang District, Suzhou City, about 70KM from Shanghai Hongqiao airport.

Our main product is acrylic letter, and stainless steel is our secondly main product.

you are welcomed to contact with me for any further questions.  
Thanks for your interesting!



---

SUZHOU ESIGN CO.LTD

Ellen ma

Phone: (+86)158 0182 2956

Email : [Ellen.ma@szesign.com](mailto:Ellen.ma@szesign.com)

---